

KAWASAKI Absorption Chiller

February 28, 2019

Kawasaki Thermal Engineering Co., Ltd.
Overseas Project Department

 **Kawasaki Thermal Engineering**

 **Kawasaki**
Powering your potential

Organization of Kawasaki



Ship & Offshore Structure

Aerospace

Rolling Stock

Energy System & Plant Engineering

Motorcycle & Engine

Precision Machinery & Robot

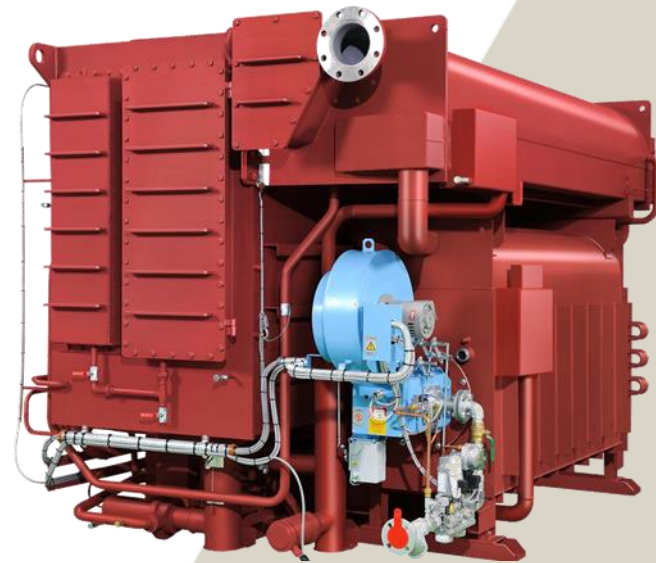


Kawasaki Thermal Engineering



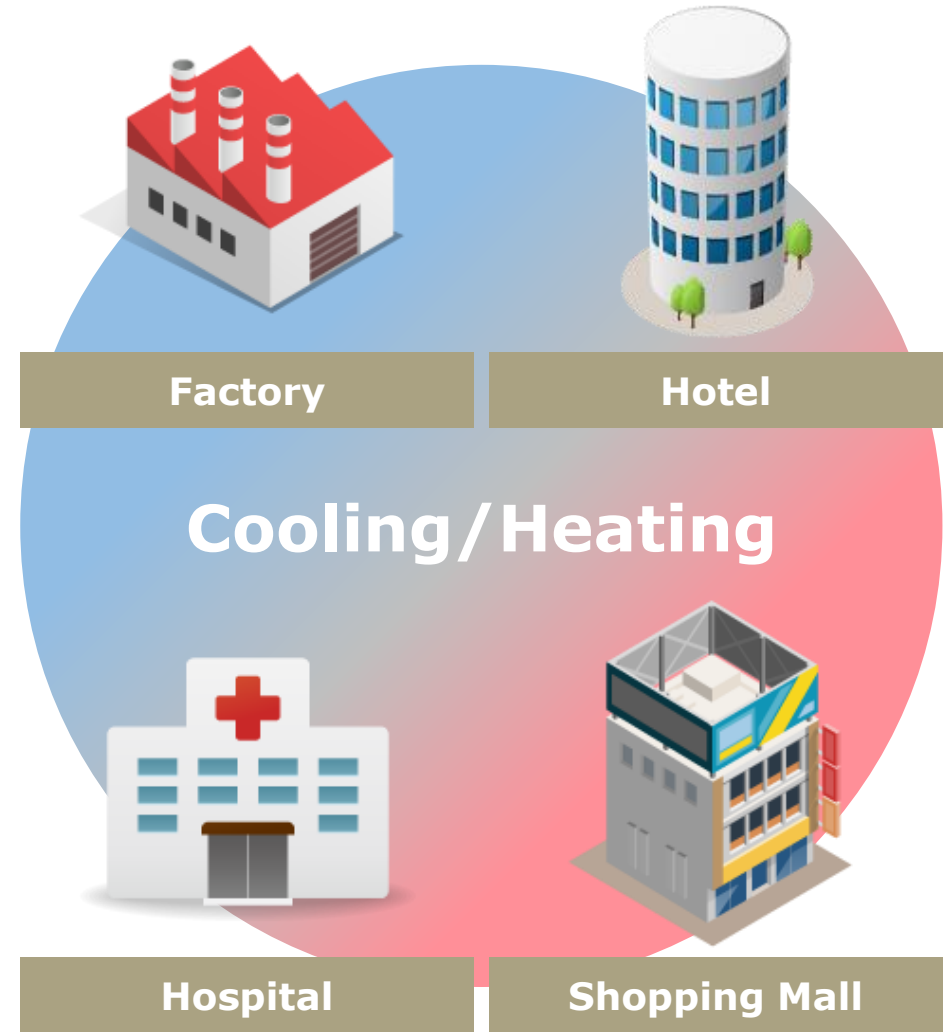
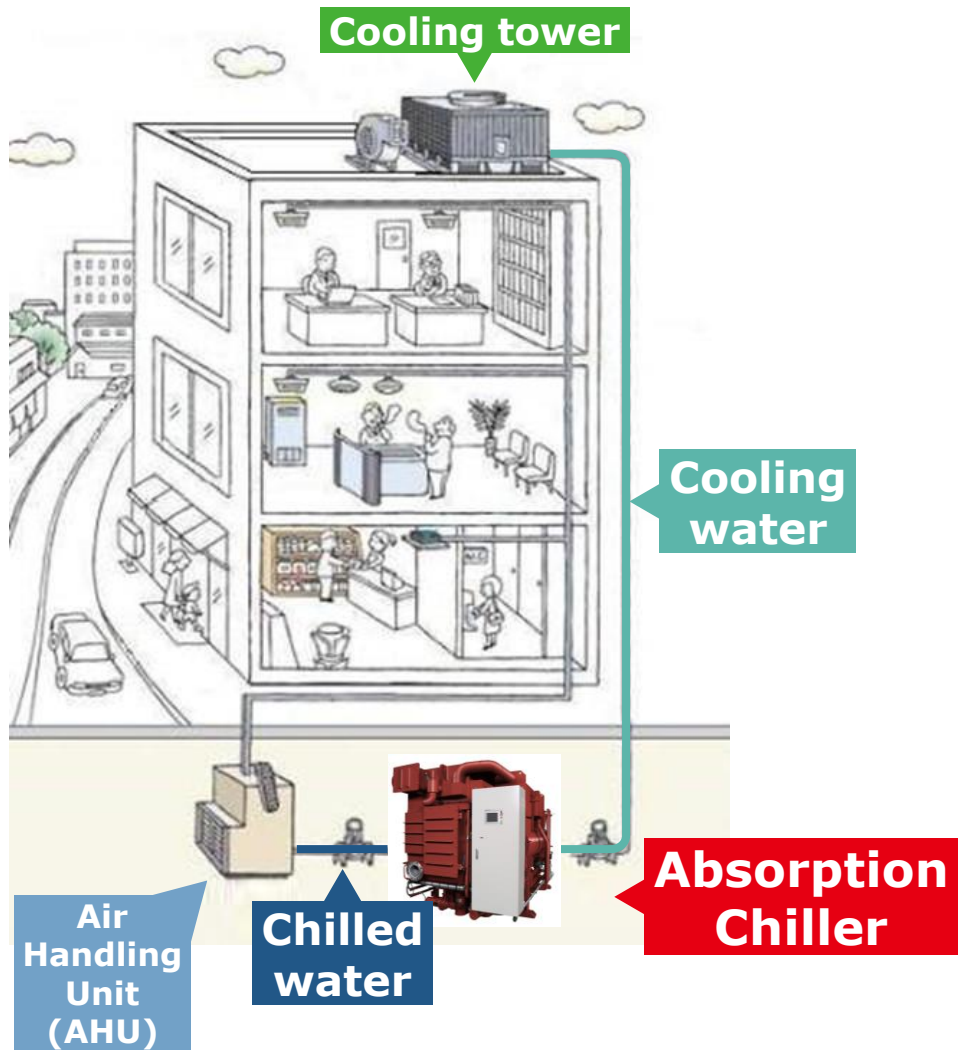
Absorption Chiller

 **Kawasaki Thermal Engineering**



 **Kawasaki**
Powering your potential

Our Clients –Absorption Chiller-



Various energy sources can be utilized

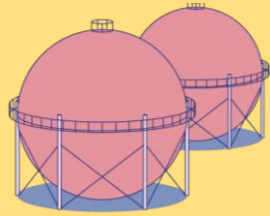
Renewable Energy



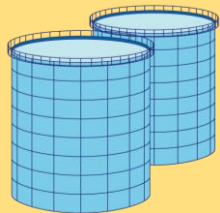
Solar, Geo-thermal

Hot Water
Steam

Fossil Fuel



Gas



Oil

Direct firing



Absorption
Chiller

Waste Hot Water

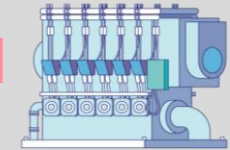
Steam

Steam

HRSG

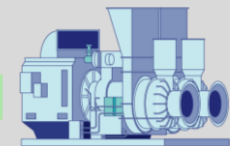
HRSG

Exhaust Heat



Gas Engine

Exhaust
Gas



Gas Turbine

Exhaust
Gas

Chilled Water

Supply Record for Solar Cooling(Gene-Link)

Absorption Chiller + Solar Heat

Solar Cooling System

This facility was installed by "Entrusted Business on the Technical Cooperation for Co-benefit Type Solar-aided Air-conditioning System in Indonesia in 2013" commissioned by Ministry of the Environment Japan.

Solar cooling system utilizes solar heat as energy sources for cooling operation.

Solar cooling with the absorption chiller requires significantly lower power consumption than the electric chiller.

The CO₂ emission of the solar cooling system is lower than the electric chiller.

Features

- Reducing Emission of CO₂, NO_x, SO_x
- Environmental Pollution Control Measures



Kawasaki, working as one for the good of the planet
“Global Kawasaki”